

RA 3

ROCKER ARM OIL LINE KIT

FOR

1960-63 FALCON AND COMET

INSTALLATION INSTRUCTIONS:

1. REMOVE "OIL PRESSURE GAUGE" FROM LEFT SIDE OF ENGINE, EXCEPT ON 1962 MODELS THE OIL PRESSURE GAUGE IS ON THE RIGHT SIDE OF THE ENGINE. SCREW IN NIPPLE USING PIPE CEMENT ON ALL THREADS TO INSURE A GOOD SEAL. (SEE FIG. 1)
2. SCREW TEE WITH 1/4" X 1/8" REDUCING BUSHING ON TO LONG NIPPLE, EXCEPT 1962 MODELS USE SHORT PIPE NIPPLE. CONNECTOR HOLE SHOULD FACE UP WHEN INSTALLED. SCREW OIL PRESSURE GAUGE INTO END OF TEE ADAPTOR. (SEE FIG. 1)
3. INSTALL TUBE CONNECTOR INTO TEE WITH 1/4" X 1/8" REDUCING BUSHING AND ATTACH COPPER TUBE TO CONNECTOR. (SEE FIG. 1)
4. REMOVE THE ROCKER ARM COVER AND THE SECOND ROCKER ARM SHAFT SUPPORT RETAINING BOLT AT THE REAR OF THE ENGINE.
5. INSTALL PUNCH PIN IN SHAFT SUPPORT TO LOCATE HOLE FOR DRILLING VALVE COVER TO ACCOMMODATE LUBRICATOR STUD. TAKE 4 OF THE VALVE COVER CAP SCREWS AND FASTEN VALVE COVER INTO POSITION. HIT COVER WITH A LIGHT HAMMER AND PUNCH WILL MARK COVER AT POINT TO BE DRILLED. (SEE FIG. 3)
6. REMOVE VALVE COVER AND DRILL A 5/8" DIA. HOLE AT PUNCH MARK. REMOVE PUNCH PIN AND INSTALL THREADED LUBRICATOR STUD INTO ROCKER ARM SHAFT SUPPORT. (SEE FIG. 2)
7. INSTALL WASHER AND HEX NUT ON LUBRICATOR STUD AND TIGHTEN. ATTACH HEX UNION AND ELBOW FITTING TO LUBRICATOR STUD AND COPPER TUBE TO ELBOW FITTING. (SEE FIG. 2)
8. MAKE SURE ROCKER ARM SHAFT IS CLEAN TO ALLOW PROPER OIL FLOW THROUGH SHAFT AND OUT OVERFLOW AT FRONT ROCKER ARM SHAFT SUPPORT.
9. START ENGINE AND CHECK FOR PROPER OIL FLOW TO ALL ROCKER ARM ASSEMBLIES.
10. TO REPLACE COVER, REMOVE TUBING AND HEX UNION AND REPLACE VALVE COVER. (SEE FIG. 2) REASSEMBLE AND START ENGINE CHECKING ALL FITTINGS FOR LEAKS.

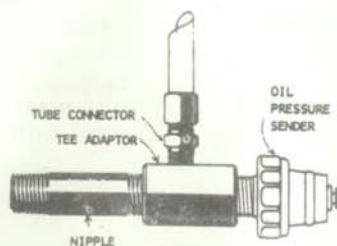
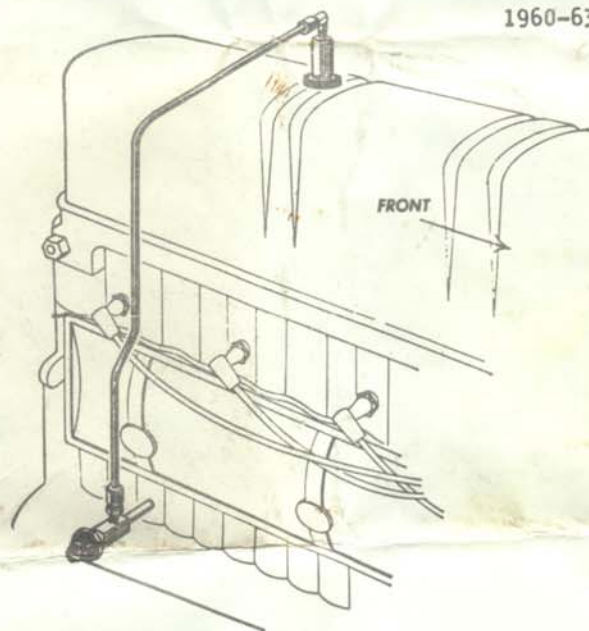


Fig. 1

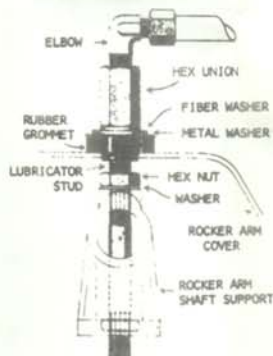


Fig. 2

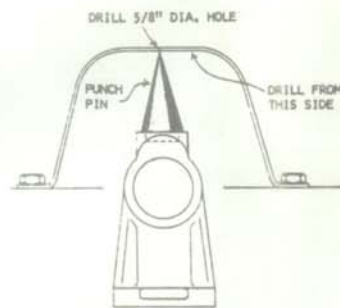


Fig. 3